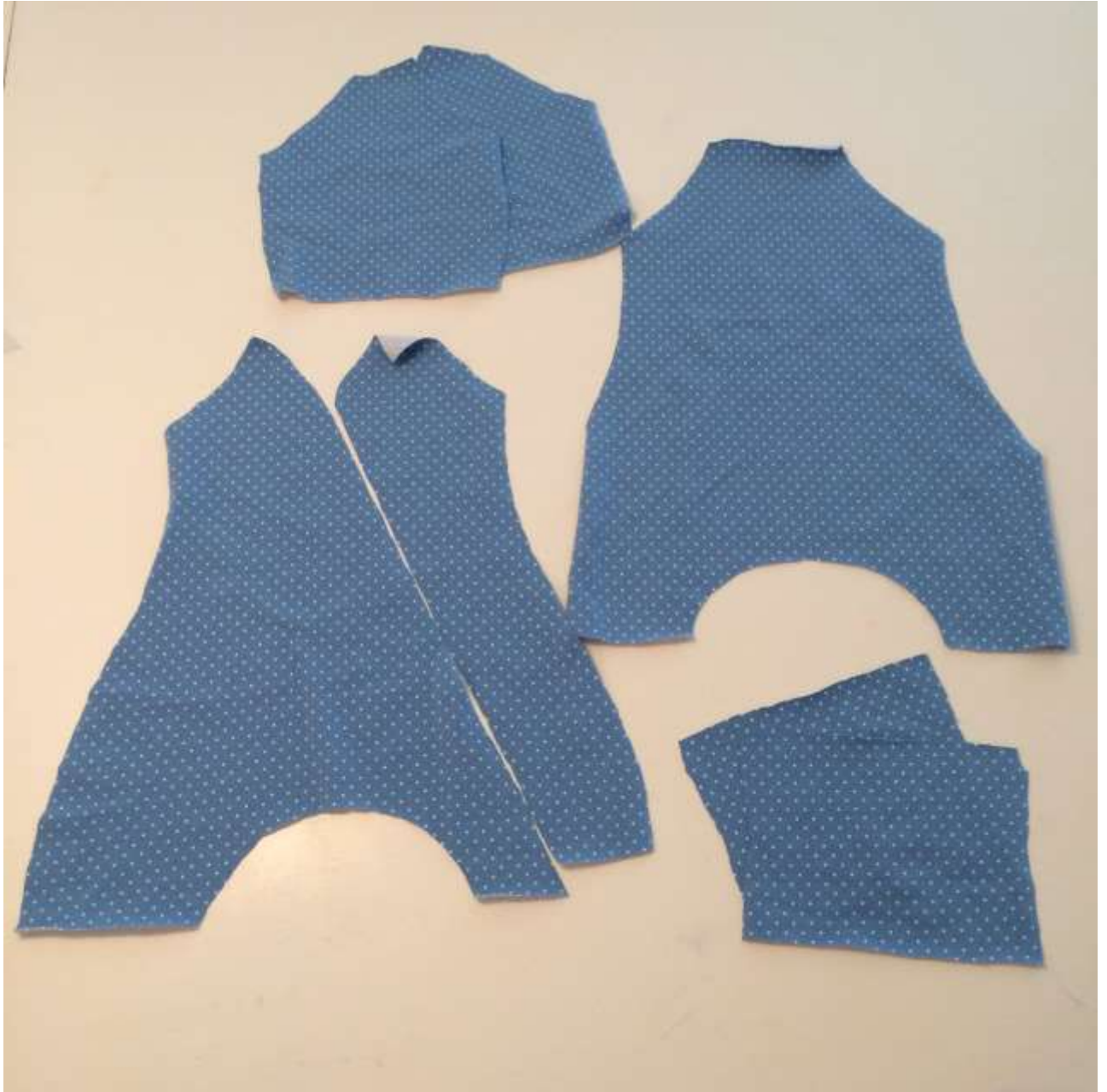


# Baggydress/romper tutorial







Cut out the pattern pieces.



Sew together the sleeves with the front and back pieces.





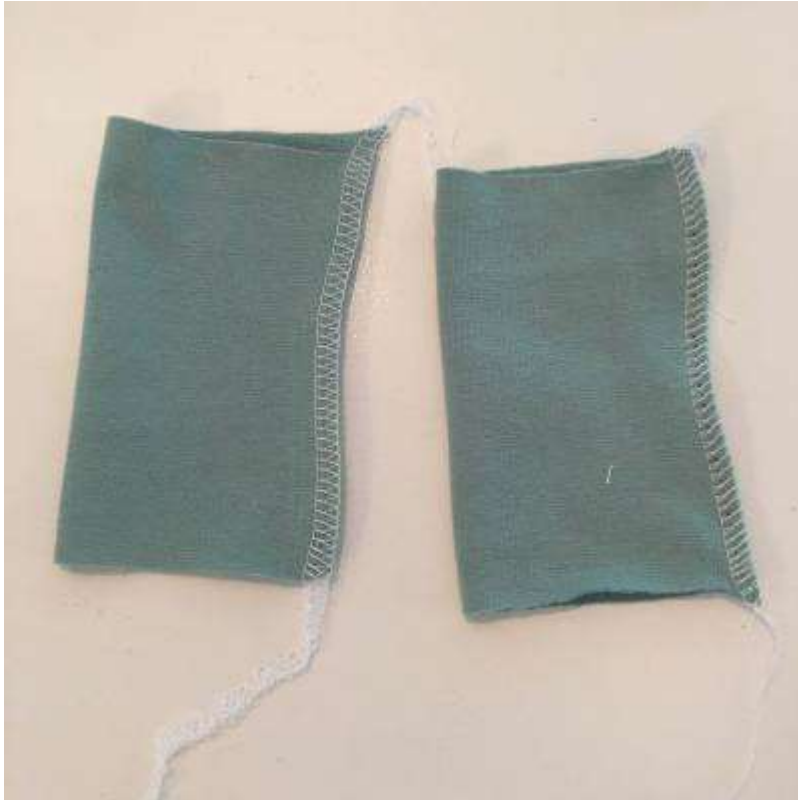
Use knit binding on the edge of the sleeves and around the neck and front opening.



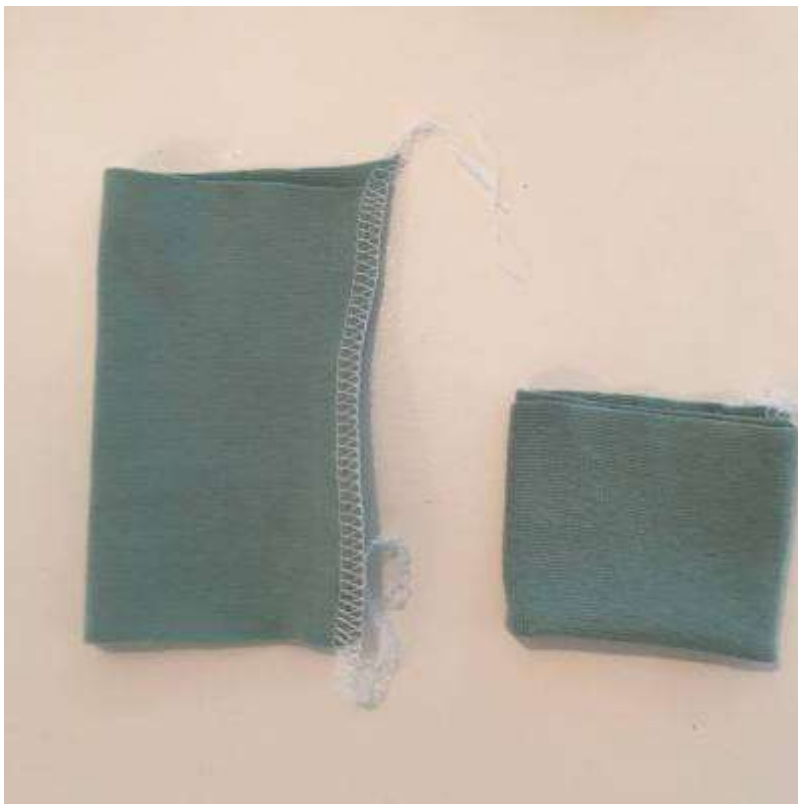
Sew together the side seams.



Glue or use needles to hold the knit binding on top of each other.



Fold the cuffs following the fabric grain and then sew together.



Fold the cuffs double.





Poke the cuff into the leg opening. Make sure that the seam on the cuff is against the inner seam of the leg.



Sew around the edges



Sew a plain stitch across the end of cuffing fabric



This is what it should look like.





Cut off one flap of excess. Then fold the other one over.



Sew another plain stitch across the front side  
It should look like this.  
Cut off the other excess piece and you are done!



Sew another plain stitch across the front side



It should look like this.





Cut off the other excess piece and you are done!





Add buttons. CC 4,5 – 5 cm.

## POCKETS



Cut out the pocket openings.







Add knit binding to the edges.



Cut out the pocket pieces.









Glue or pin the needles into place.





Add a decorative seam on the edge of the pocket piece.





Then sew together the romper.



## HOOD FOR KNIT BINDNING



Cut out the hood pieces. I have chosen to line this hood and to do that I need four pieces. The easiest way of getting two mirrored pieces is to lay the fabric double rightside facing rightside or wrongside facing wrongside and then cut out the pattern. Now it's time to sew together the hood at the back and from the forehead and back.



Attach the sleeves with the front and back piece before you sew the hood. If you are going to have lining you have to place the outerpiece with the rightside facing the rompersuits rightside and the inside of the hood with the rightside facing the rompersuits wrong side.



Pin and sew together all three layers.



Then fold the hood up and sew it together at the front if you think it makes it easier when adding banding (that's what I think). Add knit binding to the front opening and the hood.

# BUTTONING AND NECK CUFF

OBS!

The pictures are from the tutorial for A little twisted.



Start by cutting out all of the pieces which are needed. Remember to cut out the front piece to include the margin for buttoning. (Add about 4 cm on each side of the front pieces where you add the buttoning)

For buttoning: Cut a piece around 2cm with Vileseline/interlayer and iron on furthest out, towards the open edge.

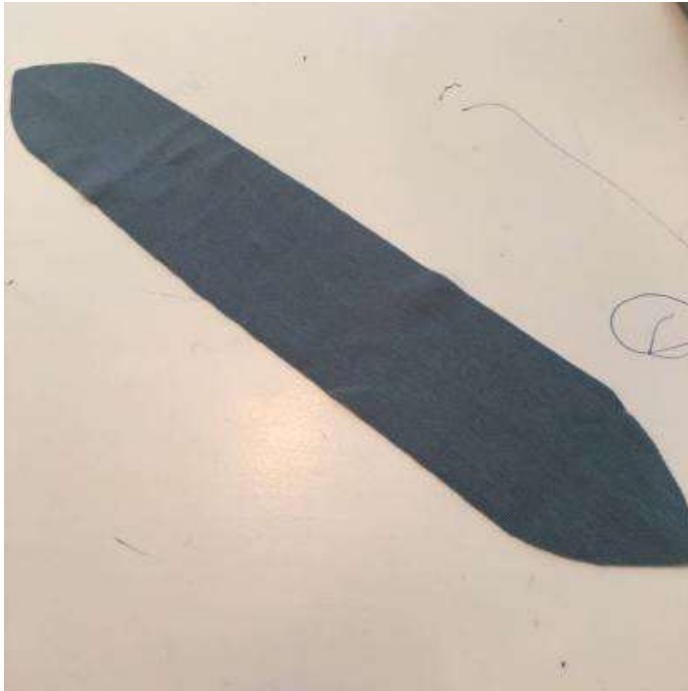




Fold in the edges 3 cm and iron flat. Sew together using decorative stitching.

## NECK CUFF

This pattern piece is only for sizes 98-170.



Fold it double lengthways



Pin it down at the top of the neck opening. You can let the edge lie a bit outside of the baggydress opening as some of it will be taken up by the seam allowance.



Attach the collar. First at the sides and then stretch out the rest of the collar as you pin it down.



Sew on the collar..



Sew a few stitches (plain stitches) to attach the seam allowance nearest the opening or sew a ribbing seam all the way around.